



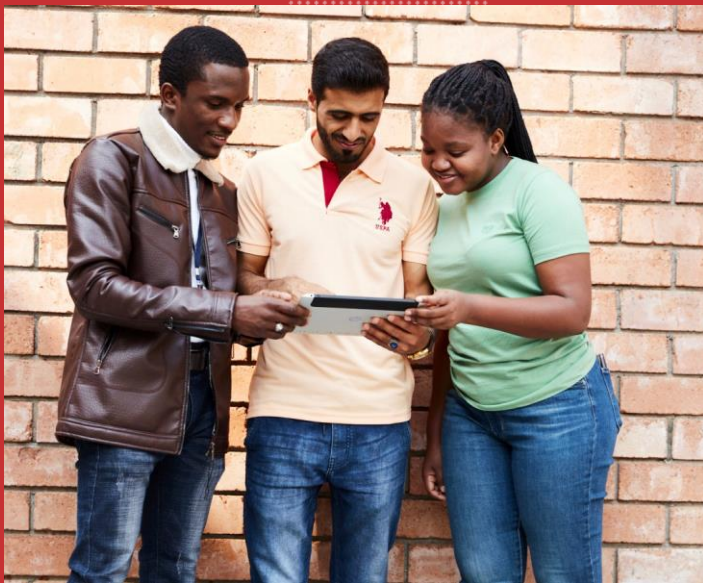
॥वसुधैव कुटुम्बकम्॥

# SYMBIOSIS INTERNATIONAL UNIVERSITY DUBAI



Legacy of more than 50 years of Excellence in Quality Education

## Graduate Catalog 2024-25





॥वसुधैव कुटुम्बकम्॥

**SYMBIOSIS**  
**INTERNATIONAL UNIVERSITY**  
The World is One Family

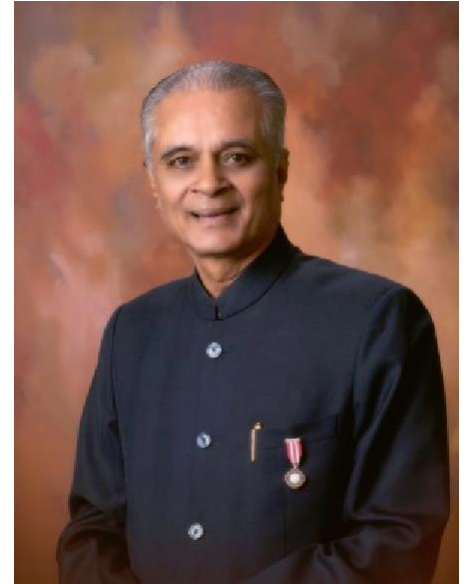
# INDEX

Chancellor's Message.....	1
Pro Chancellor's Message.....	2
Vice Chancellor's Message.....	3
Director's Message.....	4
Institution's History.....	5
Overview of Parent Institution.....	6
SIU, Dubai – Vision and Mission.....	8
Rankings and Accreditation.....	10
International Partners.....	11
Organisation Chart.....	12
Academic Calendar.....	14
Graduate Admissions.....	15
Scholarships.....	17
Code of Conduct.....	18
Academic Integrity.....	20
Program Structure with Financial Policies.....	22
Refund Policy.....	31
Grading System.....	32



## Chancellor's Message

**Prof. (Dr.) S. B. Mujumdar**  
Founder & President, Symbiosis  
Chancellor, SIU



Symbiosis was established in 1971, with the motto of 'Vasudhaiva Kutumbakam' the world is one family. Dedicated to promoting international understanding through quality education, Symbiosis is happy to now bring its commitment to a globally valued, multidisciplinary education to students in the UAE.

The university's strong global linkages are testament of its proactive approach to providing an internationalized learning experience to all its staff and students. The same standards of teaching-learning-research and pastoral care will create a conducive learning environment at its SIU, Dubai campus, leading to overall student well-being.

We look forward to welcoming students from Africa and Asia, in addition to the large Indian diaspora in the Gulf, to our new campus. This diversity will enrich the educational experience by bringing together perspectives from different cultural backgrounds. The focus on helping students

realize their potential aligns with our broader goal of education, which is not just about imparting knowledge but also empowering individuals to reach their personal and professional aspirations.

Our emphasis on multidisciplinary education is forward-thinking. Encouraging students to choose courses from multiple disciplines and broaden their perspectives is rooted in the need to be aware of the

interconnectedness of knowledge in the real world today. The overarching goal of creating globally valued graduates indicates our commitment to preparing students for success in an increasingly interconnected and globalized world.

This emphasis on diversity, multidisciplinary education, and international engagement will help us position SIU, Dubai as a hub for holistic and globally centered learning.

I extend a warm welcome to students to become a part of our rich legacy and experience the highest standards of learning at Symbiosis.

## Pro Chancellor's Message



**Dr. Vidya Yeravdekar**  
Principal Director, Symbiosis  
Pro Chancellor, SIU

Symbiosis upholds its motto “Vasudhaiva Kutumbakam” the world is one family in all its pursuits. The diverse backgrounds of the students who come here from 85 countries from all across the world, contribute to an international environment. The wide milieu of ideas that are brought to the table through the interactions and collaborations among students both inside and outside the classroom are contributive in enhancing the students' intellectual acuity.

The establishment of the Dubai campus is a significant step towards enhancing the inclusivity and diversity, that is predominant in all the Symbiosis' campuses. The University's global outreach and dedication to creating global citizens has been a guiding force behind its several initiatives.

As one of the largest Universities in India, Symbiosis has strong global linkages and an educational portfolio that boasts of excellent infrastructure, well-equipped classrooms, accommodation and an environment that assists students in realising their potential while embracing diversity. The interdisciplinary studies will allow students to choose from across multiple disciplines thus broadening their perspective and helping them gain knowledge of various domains, which makes them more adaptable to a global environment. I am sure that students from the Gulf region, West Asia and Africa, and a huge Indian diaspora in the Gulf Region, will benefit from this campus.

Through the multidisciplinary education at the Dubai Campus, we aim to create globally valued graduates and expose students and faculty to international, intercultural and comparative aspects.

On behalf of the University, I wish you success and welcome you to the Symbiosis family!

## Vice Chancellor's Message

**Dr. Ramakrishnan Raman**  
Vice Chancellor, SIU



Dear Prospective Students and Parents,

It is with great pleasure and enthusiasm that I extend my warmest greetings on behalf of Symbiosis International University as we embark on a momentous journey to establish our first-ever campus outside India, right here in the vibrant and dynamic city of Dubai, United Arab Emirates.

Symbiosis International University has a rich legacy of over five decades, nurturing academic excellence and fostering a global perspective among students and faculty. Founded in 1971 by the visionary Prof. Dr. S.B. Mujumdar, our institution has been a second home for countless international students, embodying the ideals of "World as One Family" derived from Vedic thought.

The name 'Symbiosis' epitomizes the harmonious relationship we share with our international students, representing a mutually enriching bond between India and the global student community. Committed to promoting international understanding through the provision of top-tier education, we have proudly welcomed students from more than 85 countries, creating a truly diverse and vibrant learning environment.

Our journey continues as we extend our footprint to Dubai, the thriving heart of the United Arab Emirates. This new campus will offer a range of courses initially focusing on Management, Computer Studies, and Media. However, our vision is to expand into a broader spectrum of disciplines, including Engineering, Medicine, and many others, ensuring a comprehensive educational experience for our students.

As we set forth on this exciting endeavor, we are committed to upholding the same standards of academic excellence, cultural diversity, and innovation that have defined Symbiosis throughout its history. Our Dubai campus will not only provide world-class education but also foster a dynamic and inclusive learning atmosphere where students from diverse backgrounds can thrive and excel.

I invite you to explore this catalog and discover the myriad opportunities that await you at Symbiosis International University in Dubai. Whether you are a prospective student or a parent seeking the best education for your child, we are here to support your aspirations and provide a holistic learning experience that will shape your future.

We look forward to welcoming you to our Symbiosis family and to the exciting educational journey that lies ahead. Together, let us embrace the spirit of knowledge, exploration, and global collaboration.

## Executive Director's Message



**Dr. Amitabh Upadhyia**  
Executive Director, SIU Dubai

Hello,

It is with a sense of pride and delight that I welcome you all to the newest branch campus of Symbiosis International University (SIU) in Dubai UAE, which is also its first overseas campus. Symbiosis carries a legacy of over five decades having carved out a unique niche for itself on the Indian educational landscape for its scholarly quality, high teaching & learning standards, and world-class infrastructure. Symbiosis is a highly ranked University and a first-choice institution for a large number of bright students, not only from within India but from around the globe earnestly following its vision of "Promoting International Understanding through Quality Education". Synonymous for distinctive higher education options, Symbiosis hosts over forty thousand students, pursuing various under-graduate, graduate and doctoral programs in business management, computer technology, medical science, mass-communication, law, humanities and many more, from eighty-five countries at its multiple campuses across India that keep buzzing with academic, cultural and sporting activities all around the year.

At the Dubai campus, which is centrally located at the Dubai Knowledge Park, Symbiosis is initially offering three programs in Business Management (BBA/MBA), Computer Application (BCA) and Mass Communication (BAMC) with futuristic specializations such as Artificial Intelligence & Machine Learning, Data Science & Data Analytics, Strategic Management & Leadership, Innovation & Entrepreneurship, Digital Marketing & Advertising, to name a few. The curriculum is designed to inculcate knowledge, skills and competencies which equips you with futuristic tools, techniques and attitude to face the fast changing and often unpredictable world head-on, and succeed in pursuit of your chosen profession.

Symbiosis, following its core values of 'Vasudhaiva Kutumbakam' (the world is one family) and Diversity & Inclusion amongst others, is committed to bring to Dubai a distinctive dimension of academic rigor and practice, that matches the spirit of the dynamic and diverse environment of the United Arab Emirates. With the approval of the UAE Ministry of Education, qualifications offered by SIU Dubai, shall not only be internationally recognized but truly global in their applicability anywhere in the world.

On behalf of the Symbiosis International University, I invite you to join this unique family of professionals & leaders who are contributing meaningfully to their society and global community for decades. A wonderful opportunity awaits here to take you along a path of delightful learning that fosters a pleasant, spirited and compassionate personality. I wish you all the very best in your academic and professional pursuits.



## An Affair that Founded Symbiosis

The journey of a thousand miles begins with a single step. But, it is the first step that involves deliberation and much hesitation. The Symbiosis journey however began with a surge of enthusiasm spurred on by an incident that, in itself, makes a poignant tale.

"It was an afternoon on a hot day. I was standing near the window of my house overlooking the first hostel block, of which I was the rector. A strange thing happened. A girl walked up to the window of the boys' hostel room, quickly handed over something and disappeared. My curiosity was aroused and I kept watching the girl walking up to the window day after day and suspected, like any other rector would, that an affair was afoot. So one day, I made up my mind and walked up to the door and knocked. When the door opened, I saw a Mauritian student lying in bed. His face was pale and his eyes seemed to have sunken low. I was puzzled." "When I turned to the boy for an explanation, he said, 'Sir, I have an attack of jaundice & I'm feeling extremely weak. I cannot stand up, nor walk a few steps. A girl from my country brings me food. However, since ladies are not allowed to enter the boys' hostel, she hands over the tiffin box through the window.' I was stunned. After all, it wasn't the type of 'affair' I had expected. I was very much pained & decided something had to be done about this. That was the instance, the golden moment that Symbiosis was born. "Symbiosis is a term in life science, meaning 'living together of two different organisms, for the benefit of each other'. Dr. Mujumdar, himself a professor of botany, thought this name apt for the institution. Thus the institution was founded to alleviate the problems faced by foreign students coming to India. At the time, these problems included - accommodation, meals, medical care, guidance, coaching, information about the city, etc. Symbiosis has come a long way since then. Today it is home to students from more than 85 different countries. These students are offered the best learning resources, industry

exposure, a strong international students' alumni network, a global recognition, and above all, a truly enriching Indian experience.





## SYMBIOSIS INTERNATIONAL UNIVERSITY, PUNE, INDIA

Symbiosis International University is a vibrant ecosystem where cultures interweave, minds expand, and the future takes shape. Founded in 1971 with the vision of "Promoting International Understanding through Quality Education," Symbiosis has become a beacon of multicultural learning, welcoming students from over 85 countries. Symbiosis draws inspiration from the ancient Vedic philosophy of "*Vasudhaiva Kutumbakam*," meaning "The World is One Family."

Symbiosis International University was established in 2002, and has campuses in six cities across four states, each pulsating with the energy of international students and academic excellence. This spirit of inclusivity manifests in every aspect of the university, from its diverse student body to its commitment to building bridges between nations. The University offers a kaleidoscope of academic programs, ranging from undergraduate degrees to doctoral studies, diplomas and certificate programs. Whether your passion lies in management, law, computer science, medical and health sciences, media communication, design, engineering or humanities, Symbiosis International University has a path for you.

The university is a champion of research and innovation, fostering a culture of exploration and discovery. The university boasts dedicated research centers where faculty and students collaborate on ground breaking projects, pushing the boundaries of knowledge. The university provides more than just academic rigor; it cultivates a vibrant student life filled with opportunities for growth and connection. From cultural events and sports teams to social initiatives and service learning projects, students learn, thrive, and build lifelong friendships in a diverse and dynamic environment. Symbiosis is deeply committed to the cause of "Health for All."

Choosing Symbiosis International University is choosing more than just a university; it's choosing a community, a family, and a world of possibilities. Come experience the magic of a truly international education, where diversity is celebrated, innovation thrives, and your future takes flight.

## Campuses in India



# Symbiosis International University (SIU), Dubai

## Vision

Promoting international understanding through quality education

## Mission

To nurture a vibrant learning community with a strong focus on integrating local and global practices of teaching-learning-evaluation, research-innovation, global citizenship, and aimed at building a sustainable future.

## Graduate Attributes

Attributes	Facilitation and Monitoring	Outcomes
Scholarship: research, inquiry and lifelong learning	Teaching- learning process, curriculum design, updating of curriculum in emerging areas, student centric teaching methodologies, project based learning, research projects, case studies	Participating in student conferences, publishing research papers/ case studies in student journals, supporting faculty as research and teaching assistants, desire for seeking further higher education
Global citizenship: ethical, social and professional understanding	Projects, internships, field trips, service learning and extension activities, ensuring diversity on campus, promoting social sensitivity offering the 'Vasudhaiva Kutumbakam' SIU Global Citizenship (mandatory) course to all the students	Interest in volunteering and working for social causes, cross cultural sensitivity, ability to work in cross cultural groups, increased cross cultural competence
Eco-literate: sensitivity towards a sustainable environment	Programs/courses related to environment sustainability, participation in activities related to environment/ecology preservation, environment projects and study tours	Environmental understanding and sensitivity among students, involvement in NGOs, and commitment to eco-friendly spaces
Employability: equipped with skills, attributes, leadership and entrepreneurial qualities that society needs; being capable of making a contribution to society through earning a living	Domain specific expertise, training/internship with industry, enhancement and value-added courses, Co-curricular activities. Assessments that include presentations, public speaking and oratory, class leads, team learning and group activities.	Program appropriate placements, entrepreneurial opportunities, good team work skills, work ethic, understanding of corporate /organizational working, successful internships

## Core Values

The core values which drive all activities of SIU, Dubai are:

***Vasudhaiva Kutumbakam (the world is one family):*** SIU, Dubai is committed to this all-encompassing principle that aims to promote global citizenship and respect for diversity;

***Diversity and Inclusion:*** SIU, Dubai is committed to promote diversity and inspires tolerance and embraces inclusiveness;

***Integrity and Honesty:*** SIU, Dubai promotes the values of honesty, integrity and trustworthiness;

***Transparency and Accountability:*** SIU, Dubai follows principles of ethics, openness, reliability, and responsibility towards all its stakeholders

***Social Commitment and Gender Equity:*** SIU, Dubai is committed to community engagement and environment sustainability, and being alive and responsive to the needs and challenges of local, national and global communities

***Innovation:*** SIU, Dubai promotes creativity, entrepreneurship and a spirit of inquiry as we work to find solutions to the many shared challenges we face as a global community.



## Rankings and Accreditation



Ranked amongst the top 1051-1100 universities (Overall), & 661 in Governance



Ranked in the 261-270 band in universities in Asia



The University is ranked among the top 201-250 Universities in Asia by the Time Higher Education Asia Ranking 2023



The Times Higher Education World University Rankings 2023

- Ranked Between 801-1000 Globally (Overall)
- 437<sup>th</sup> Citation Rank Globally
- 23<sup>rd</sup> in India (Overall)



- Ranked in the 401-500 band in Social Sciences
- Ranked in the 501-600 band in Business & Economics
- Ranked in the 501-600 band in Accounting & Finance
- Ranked in the 401-500 band in Computer Science
- Ranked in the 601-800 band in Engineering



Awarded QS I-GAUGE - DIAMOND rating in Indian colleges and universities



National Assessment and Accreditation Council (NAAC)  
The University has been accredited for three cycles.

- 'A++' grade in 2022
- 'A grade' in 2016
- 'A grade' in 2009



National Institutional Ranking Framework 2023

- 32<sup>nd</sup> among Universities
- 59<sup>th</sup> Overall
- 6<sup>th</sup> in Law Category
- 17<sup>th</sup> in Management category



MBA program of a Constituent in India is AACSB accredited.



The only Indian University to have received the Asia Pacific Quality Label (APQL)



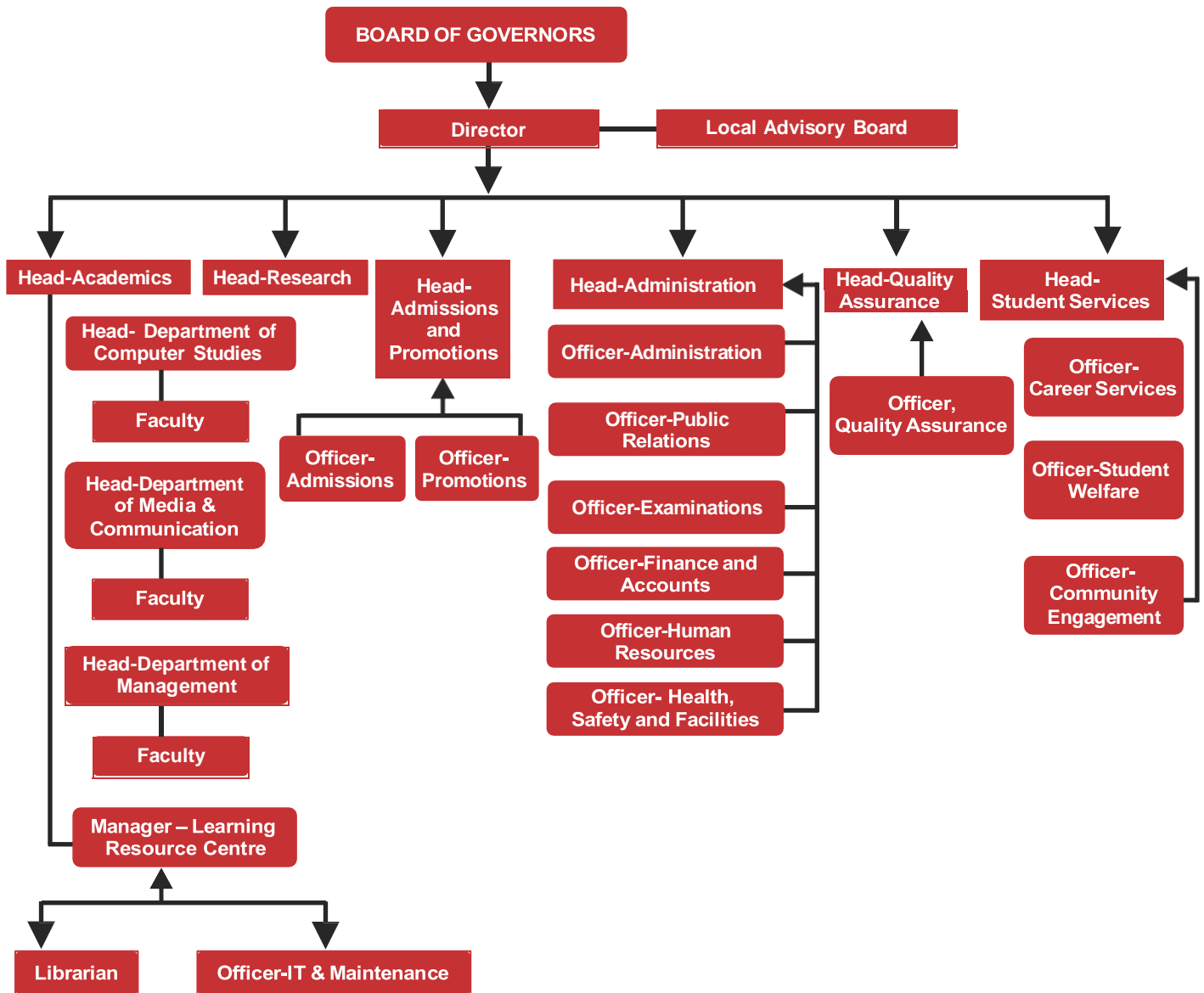
Atal Ranking of Institutions on Innovation Achievement 2021 has ranked the University at no.10 in the category "University & Deemed to be University (Private/Self Financed)"

## SIU International Partners

The parent institution has multi-level academic partnerships with well ranked universities from across the world. These collaborations are also available for SIU, Dubai faculty and students

University / Institute	Country
National Taiwan Normal University	Taiwan
University of Cologne	Germany
Aston University	UK
Universität Hamburg, UHH- Faculty of Humanities	Germany
RUDN University	Russia
National University of Ireland (NUI) Galway	Ireland
Swinburne University of Technology	Australia
University of Adelaide	Australia
University of Queensland	Australia
Jagiellonian University of Kraków	Poland
Bond University	Australia
University of Johannesburg	South Africa
Sungkyunkwan University	South Korea
Deakin University	Australia
University of Ghent	Belgium
University of Cape Town	South Africa
Leiden University	The Netherlands
The University of Waikato (Te Piringa- Faculty of law)	New Zealand
ISEG Lisbon School of Economics & Management	Portugal
Macquarie University	Australia
Loughborough University	UK
KTH Royal Institute of Technology	Sweden
Amsterdam School of International Business- Amsterdam University of Applied Sciences	Netherlands
University of Bristol	UK
University College Dublin	Ireland
Western Sydney University	Australia

# Organisation Chart





## Governing Body

The Board of Governors shall consist of eminent persons capable of contributing to and upholding university ideals and traditions.

### Constitution:

- |   |               |
|---|---------------|
| i) Principal Director, Symbiosis  | - Chairperson |
| ii) Two eminent experts, from UAE   | - Members     |
| iii) One person representing the industry/business/ alumni from UAE region    | - Member      |
| iv) Vice Chancellor of the parent institution                                 | - Member      |
| v) Two persons nominated by the Board of Management of the parent institution | - Member      |
| vi) One person nominated by the Symbiosis Trust                               | - Member      |
| vii) The Director, Symbiosis International University, Dubai, UAE             | -Secretary    |

## Institution's resources and physical setting

The parent institution has identified a site for establishing their SIU, Dubai campus. The campus at the Dubai Knowledge Park has modern classrooms, well-equipped computer laboratories, dedicated prayer halls and comfortable staff areas; every detail crafted to support the entire academic journey of the student. An expansive Learning Resource Centre and efficient administrative facilities ensure hassle-free learning, while student services and dedicated support infrastructure guarantee a smooth and enriching experience.

## Institutional Licensure and Program Accreditation

[Symbiosis International University Dubai](#) is officially [licensed](#) by the Ministry of Education, United Arab Emirates, to award degrees/qualifications in higher education. Graduate degree program is [accredited](#) by the Commission for Academic Accreditation (CAA) of the Ministry of Education, United Arab Emirates.

## Academic Calendar – AY 2024-25

Semester	Start Date	End Date	No. of Weeks/Days
Fall (Semester I) starts	Monday, September 9, 2024	Friday, January 10, 2025	16 weeks
Winter Break	Sunday, December 22, 2024	Sunday, January 5, 2025	14 days
Preparatory leave	Saturday, January 4, 2025	Sunday, January 5, 2025	2 days
Examination	Monday, January 6, 2025	Friday, January 10, 2025	5 days
College Events / Activities	Monday, January 13, 2025	Friday, January 31, 2025	18 days
Spring (Semester II) starts	Monday, February 3, 2025	Friday, June 6, 2025	16 weeks
Spring Break	Saturday, April 5, 2025	Saturday, April 19, 2025	2 weeks
Preparatory leave	Saturday, May 31, 2025	Sunday, June 1, 2025	2 days
Examination*	Monday, June 2, 2025	Friday, June 6, 2025	5 days
Summer Break	Monday, June 9, 2025	Monday, September 8, 2025	13 weeks

## List of Holidays

Date	Holidays
September 15, 2024	Prophet Muhammad's Birthday
December 1, 2024	Commemoration Day
December 2, 2024	National Day
December 3, 2024	National Day Holiday
January 1, 2025	New Year's Day
March 29 to April 1, 2025	Eid al-Fitr Holid
June 5, 2025	Arafat Day
June 6 to June 8, 2025	Eid al-Adha
June 26, 2025	Islamic New Year
September 4, 2025	Prophet Muhammad's Birthday

- Semester breaks and national day holidays are subject to confirmation from Ministry of Higher Education and Scientific Research
- Islamic holidays can only be confirmed once Official Government announcements are made. The dates mentioned in the calendar are tentative and subject to change due to unforeseen circumstances.

# Graduate Admissions

All applications for admissions of students at SIU, Dubai will be verified and routed through an Admission Committee.

## Eligibility Criteria for Graduate students:

### Academic Excellence:

- Hold a Bachelor's degree from a recognized university with minimum 75% marks or CGPA of 3.0 (out of 4.0).
- Conditional admission possible for lower CGPA with Board of Governors approval and MoE compliance.
- English Language Proficiency:
- Demonstrate English skills through one of these tests:
- EmSAT: 1400+
- TOEFL: 550+ (213 CBT, 79 iBT)
- IELTS Academic: 6.0+
- Other MoE-approved tests
- English Medium Exemption:

Skip the English test if you have completed K-12 and Bachelor's in English in an English-speaking country (e.g., UK, USA, Australia, New Zealand).

**MoE may revise approved tests and scores. Check the MoE website for latest info.**

### Document Checklist for your SIU, Dubai Application:

Academic Records:

- 12<sup>th</sup> or equivalent final mark sheet (both sides!)
- Bachelor's degree mark sheets (all semesters/years) (Certified English translations: Required if mark sheets are not in English).

**Upload clear scans of all documents along with your online application.**

### Don't Let Missing Documents Hinder Your SIU, Dubai Dream!

Results Pending? No Worries! Apply even if you haven't received your final grades or transcripts yet. Just make sure to submit them immediately after they're available.

Missing deadlines can cost you your SIU, Dubai opportunity. Submit all required documents by the stipulated date.

### Documents to be uploaded for your SIU, Dubai application:

- Bachelor Degree (if already completed)
- Statement of Purpose
- Valid Passport Copy
- Work Experience Certificate (if applicable)
- CV (Curriculum Vitae)
- English Proficiency Test Result (if already taken) (Once results arrive, immediately submit the Final Grades or Transcripts)
- Payment Proof of Application Fee: Students must pay their Application Fee by SWIFT/NEFT/RTGS Transfer, and must upload the scanned copy of the successful fee payment transaction.

**Application Fee per program:** 1500 AED

### Selection Procedure:

- Merit Matters! Your academic record, English skills, personal statement, experience (if any), CV, and interview all play a role in getting shortlisted.
- If shortlisted, get ready to impress the Admission Committee in the personal interview.

### **Admission Confirmation Letter:**

- You'll receive an email with one of three outcomes:
- Offer: Congratulations! Secure your spot by paying the fees mentioned in your Offer Letter.
- Waitlist: Stay hopeful! You might still get accepted if openings arise.
- Regret: Keep your chin up! Explore other options and apply again in the next admission cycle.
- Bring copies of all uploaded documents for confirmation and eligibility check on admission day.
- Don't forget the originals! SIU, Dubai will verify them before your studies begin.

### **Student VISA:**

It is mandatory for all foreign students to have a valid UAE residence visa to study in the UAE.

### **Documents required to be submitted for confirmation of eligibility and admission:**

- Mark sheet of 12<sup>th</sup> Std./ equivalent
- Equivalence Certificate (if applicable)
- Semester wise/ Year wise Bachelor Degree Mark sheet
- Passing/ Provisional Degree Certificate
- English Proficiency Test Result (if applicable)
- Migration Certificate to be submitted in original (if applicable)
- Transfer Certificate to be submitted in original (if applicable)
- Change of Name Certificate by Government Gazette (if applicable)
- Work Experience Certificate, (if applicable)
- Passport Copy (if applicable)
- Valid VISA Copy (if applicable)
- Valid Residential Permit Copy (if applicable)
- Anti-Ragging/Hazing Affidavit by Student
- Indemnification Undertaking by Student

### **Important Note for SIU, Dubai Applicants:**

- Candidates are advised to submit all the above-mentioned documents for confirmation of provisional admission and eligibility on the date of reporting.
- Candidates should also carry all their original documents. These would be required at the time of document verification by SIU, Dubai Eligibility team.
- Students shall abide by all other SIU, Dubai requirements which will be communicated through online, website, catalog/prospectus and all other admission material.

For admission related queries send email to [admissions@siu-dubai.ac.ae](mailto:admissions@siu-dubai.ac.ae)



## Scholarships

To empower ambitious learners, and to ignite their academic journeys, we proudly unveil merit based attractive scholarships designed specifically for undergraduate and graduate students.

Merit based scholarships will be awarded on the basis of the following documents uploaded along with the application form:

- Nationality
- Sex
- Academic Credentials

### SIU, Dubai Inaugural Scholarship for the year 2024-25

- **Pursue Your MBA Without Worry:** The new Master of Business Administration program offers generous scholarships specifically tailored for the inaugural batch. High-achieving students will receive significant financial support.

### SIU, Dubai Women Empowerment Scholarship for the year 2024-25:

- **Master of Business Administration:** We are dedicated to empowering your ambitions, offering Emirati female applicants a merit-based scholarship equivalent to a remarkable investment in your MBA studies.
- **Eligibility:** Open to all aspiring Emirati women embarking on their undergraduate or MBA journey at SIU.

### Tips:

- Apply Early – Deadlines vary, so check the website for your specific program.
- Seek Guidance – The Admissions Team is happy to answer your questions and support you throughout the admission process.

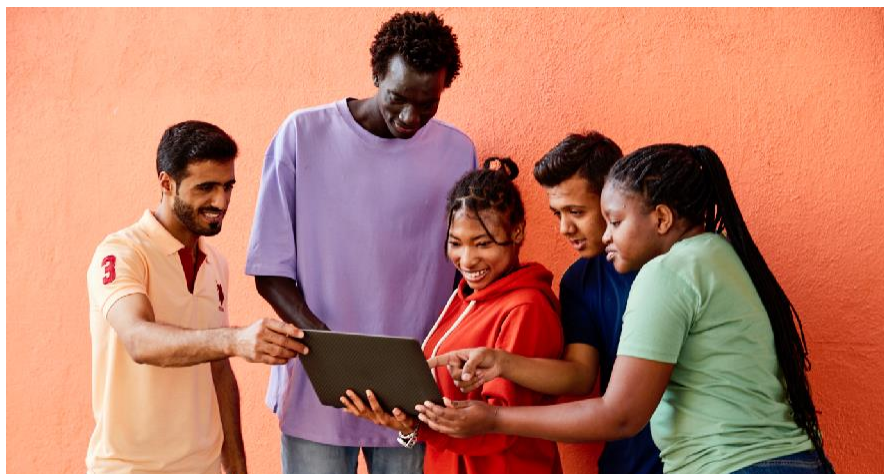
With dedication, the right program, and this guide as your compass, you're well on your way to joining the vibrant academic community at Symbiosis International University, Dubai. We wish you the best of luck on your admission journey!

## Student Services

**Library:** The library has a great ambience with a reading hall and a reference section. It also has a digital library and internet browsing facility with e-books and online databases. Apart from this, SIU Dubai shall provide to its students, through various co-operative agreements with other libraries and learning resource centres based locally. This shall greatly benefit our students by expanding access to resources and enhancing learning opportunities. The Library shall remain open from 9.00 am to 8.00 pm from Monday to Friday. Students are requested to refer to the Student Handbook and Library Manual for details of Library usage policies and procedures.

**Emotional Well-being:** SIU, Dubai is committed to supporting the overall, holistic health & well-being of its students & staff.

**Extra-Curricular activities:** There are ample opportunities for students to showcase their talents and pursue their interests through a diverse range of extracurricular and co-curricular activities and competitions.



# Code of Conduct

The Code of Conduct helps maintain an appropriate sense of order that allows the pursuit of the desired graduate attributes in a safe and fair environment. SIU, Dubai prioritizes a respectful, inclusive, and academically enriching environment for all. By following these guidelines, you contribute to a community of excellence and unlock your full potential as a student.

## Respect and Inclusion:

- Treat everyone with respect, regardless of their background or beliefs. Discrimination based on race, color, religion, gender, etc. is strictly prohibited.
- Uphold the law and avoid any unlawful conduct.

## Commitment to SIU, Dubai:

- Embrace the university's mission, values, and ethos. Follow all rules and regulations, even as they evolve.
- Contribute to a safe and inclusive campus environment free from harassment or discrimination. SIU, Dubai has a zero-tolerance policy towards sexual harassment and offers resources for support and reporting.

## Academic Expectations:

- Maintain a minimum 75% attendance to be eligible for semester exams. Manage personal and extracurricular activities within the allotted 25% absence limit.
- Aim for at least 90% attendance to participate in the SIU, Dubai placement process.
- Complete assignments and academic activities on time, regardless of personal challenges. Be self-motivated and strive for excellence in your studies and extracurriculars.

## Professionalism and Conduct:

- Dress appropriately, including wearing uniforms during guest lectures and seminars.
- Smoking, alcohol, and drugs are strictly prohibited on campus. Violations will result in disciplinary action, including expulsion.

## Continuous Improvement and Communication:

- Be aware that curriculum, fees, and procedures may evolve as SIU, Dubai grows and adapts. Updates will be communicated regularly.
- If you have any concerns, utilize the proper channels to address them with the relevant committees.

## Student Dress Code:

SIU, Dubai embraces a community rich in diverse cultures and backgrounds. In keeping with this spirit, we encourage students to dress in a way that reflects both professionalism and respect for the cultural and religious ethos of the UAE.

## Grievance Redressal:

SIU, Dubai is committed to providing a fair, safe, and productive learning environment for all students. It provides services and extends all possible help to students in order to create a conducive environment, imbuing values, ethics and morals. It has a well-defined Grievance Redressal mechanism to resolve any grievances.



## Appeals

Any student(s) aggrieved by the decisions taken summarily by the Director/ Head-Student Services (without forwarding the case to the CDC) may wish to file an appeal before the Campus Disciplinary Committee within a period of seven (7) working days. Any person aggrieved by the decision of Campus Disciplinary Committee may wish to file an appeal before the Director, SIU, Dubai within a period of seven (7) working days.

### Procedure for Appeal:

The student aggrieved by the decision of the Director / Head-Student Services may prefer an appeal in the prescribed format before the Campus Disciplinary Committee within a period of seven (7) working days. The students aggrieved by the decision of the Campus Disciplinary Committee may prefer an appeal in the prescribed format before the Director, SIU, Dubai within a period of seven (7) working days. The Director may set up a committee or may seek the assistance of external experts as the case may be to investigate all relevant documents, findings and recommendation(s) related to the case. After hearing all the concerned parties and considering all the available materials on record, the Director shall take just and fair decisions. This decision shall be final and binding on all parties

### Appeals before the Campus Disciplinary Committee:

The following procedure shall be followed to inquire and decide with the appeals before the Campus Disciplinary Committee:

- Any aggrieved student can file an appeal with the Campus Disciplinary Committee within seven (7) working days.
- The Member Secretary of the Campus Disciplinary Committee shall send a notice of hearing to the appealing student(s) and/ or parents (wherever applicable) and the Director within five (5) working days from receipt of the appeal in the prescribed format.
- The appealing student(s) shall be given a just and fair opportunity of hearing. They may, if they so desire, file their written statements. Under exceptional circumstances, either party may produce additional document(s) or lead additional evidence(s).
- The Campus Disciplinary Committee, in appropriate cases may permit the appearance of a party through electronic/online means.
- Either party does not have the right to legal representation during the appeal.
- The University shall arrange for inspection of documents, material, statements etc., if so desired, on the respective campus. The Committee shall follow the principles of natural justice while inquiring and deciding with the appeal.
- After hearing all the concerned parties and considering all the available materials on record, the Campus Disciplinary Committee shall take just and fair decisions. The Member Secretary of the Campus Disciplinary Committee shall communicate the decision of the Campus Disciplinary Committee to the appealing students/ concerned parties, with a copy to the Director and Officer, Student Welfare, within three days after the hearing.
- The Member Secretary shall communicate the decision of the appeal(s) to the appealing student(s)/parent(s), and the Director SIU, Dubai with a copy to the Campus Disciplinary Committee members and the Officer-Student Welfare.
- Either party may prefer a second appeal against the decision of Campus Disciplinary Committee before the Director, SIU, Dubai within three (3) working days after receiving the decision.
- The Officer-Student Welfare shall make a monthly report of all cases and submit it to the Director, SIU, Dubai.

## Academic Integrity

SIU, Dubai upholds the principles of academic integrity. Academic misconduct can include acts of cheating, plagiarism (the representation of words, expressions, productions, or creative works of another as one's own, including presenting the work of current courses that is the same as a previous submission for another course without obtaining the instructor's permission), fabrication of facts and assignments, buying or selling of examination papers or assignments, failing to comply with the code of conduct for examination, and will result in appropriate punishment as detailed in the Student Handbook.

- At SIU, Dubai, integrity, courtesy, and consideration are not just words, they are the pillars of our academic community. We believe in fostering a learning environment where everyone feels respected and can thrive through honest effort.
- However, we understand that mistakes can happen. If any concerns about academic misconduct are raised, a competent authority will investigate and take appropriate action based on the severity of the issue.
- To be clear, academic misconduct, including plagiarism and unfair means during assessments, has no place at SIU, Dubai. We encourage all students to uphold the highest standards of academic integrity, not just to avoid consequences, but because it strengthens your learning and promotes fair competition.
- While this list provides examples of disruptive conduct and academic misconduct, it is not exhaustive. We reserve the right to address any behavior that undermines the university's mission or disrupts the learning environment.
- The Code of Conduct serves as a detailed guide to ethical behavior and expected conduct at SIU, Dubai. We encourage you to familiarize yourself with it to ensure a smooth and successful academic journey.
- Remember, fostering an environment of integrity benefits everyone. By embracing honesty and respect, we all contribute to a vibrant and supportive learning community where everyone can reach their full potential.

### Understanding of Credits:

SIU, Dubai follows the internationally recognized practice of considering 1-semester credit equal to approximately 1 hour of time in class per week over a semester of 15 weeks or longer.

For the experiential learning component of courses or laboratory or studio-based courses, 1-semester credit requires two hours of experiential learning (laboratory time or studio time, etc.) which will be considered equivalent to 1 hour of class time.

SIU, Dubai regards 60 credits relevant to the specialization as fulfilling the requirements of a major within a program and 24 course credits relevant to the specialization as fulfilling the requirements of a minor within a program.

Core courses are discipline-specific courses that students in a particular program have to complete irrespective of specialization (major).







# Master of Business Administration

## Program Learning Outcomes

MBA Program Learning Outcomes aligned with QFEmirates: Level 9 (Masters' Degree)

Program – MBA		
Learning Outcomes After successful completion of the MBA program, students will be able to:		Alignment with QFEmirates – Level 9 (Masters' Degree)
PLO 1	Demonstrate advanced knowledge of business management principles in a local and global business environment.	Knowledge
PLO 2	Apply leadership and collaborative teamwork skills to manage professional activities in complex organizational contexts.	Competence – Role in Context
PLO 3	Critique and analyze challenging business problems independently, to provide sustainable and innovative strategic solutions.	Competence – Autonomy and Responsibility
PLO 4	Formulate a suitable research design for scanning the business environment to implement sustainable and innovative business ideas that align with ethical business standards.	Competence – Self development
PLO 5	Use specialized communication tools and media to effectively articulate complex ideas in a multicultural environment.	Skill

## Academic fee and charges

<b>Master of Business Administration - MBA Weekday: Payment Plan – Academic Fees &amp; Charges</b>						
Sr. No.	Description	Year 1		Year 2		Total Fees in AED
		Semester 1	Semester 2	Semester 1	Semester 2	
1	Academic Fee	22,500	22,500	22,500	22,500	90,000
2	Graduation Fee	-	-	-	500	500
3	Security Deposit (refundable)	4,000	-	-	-	4,000
	<b>Total</b>	<b>26,500</b>	<b>22,500</b>	<b>22,500</b>	<b>23,000</b>	<b>94,500</b>

Medical and Visa\*\* charges for overseas students seeking student visa shall be AED 5,000 in the first year, renewable every year for AED 3500/-

### Note:

- Application Fee (non-refundable) will be charged @ AED 1,500 per program (inclusive of VAT).
- Any other charges incurred on behalf of the student/ to provide services to the student will be charged at actuals.
- Backlog Fee will be charged additional @ AED 500 + 5% VAT per course as applicable.
- Graduation Fee will be charged additional @ AED 500 + 5% VAT per course as applicable.
- \*Medical Insurance and Visa charges (non-refundable) (inclusive of VAT), will be additional @ AED 5000 for overseas students requiring institutional visa, AED 1,000 will be charged in addition to this for students who are within UAE.
- Administrative fees (non-refundable) @ AED 1000 + 5% VAT will have to be paid by the student at the time of application for the cancellation of the admission.
- Administrative fees (non-refundable) @ AED 1000 + 5% VAT will have to be paid by the student at the time of application for the transfer of the admission.
- A late fee will be applicable for all fee payments that are not paid as per the schedule.
- VAT @ 5% will be charged extra on fees except refundable Security Deposit.

### Fees Collection :

- Each SIU, Dubai program listed in the catalogue carries a prescribed fees. Students admitted to a program must pay this prescribed fees on or before the date mentioned in the invoice.
- A fee payment schedule is provided upon admission to admitted student and in case of an installment plan the payment should be made by the 10<sup>th</sup> of each month.
- The University may allow payment of semester fees in up to two instalments per semester upon request.

### Annual Installment Plans

- 1<sup>st</sup> Installment – Before start of Fall Semester
- 2<sup>nd</sup> Installment – 8<sup>th</sup> Week of Fall Semester
- 3<sup>rd</sup> Installment – Before start of Spring Semester
- 4<sup>th</sup> Installment – 8<sup>th</sup> Week of Spring Semester

**The fees can be paid through any of the following mode of payment :**

- Cash
  - Credit or Debit Card
  - Cheque
  - Direct Bank Transfer
  - Website Payment Gateway
  - Online Payment Link,
- Payment against Cheque(s) can be done 5 days prior to the date of the presenting the Cheque(s).
  - If paying by bank transfer, all bank charges are to be borne by the remitter. Receipts will be issued upon confirmation of the transfer.
  - Fees can also be paid at the Fee Counter in the university from 9:00 AM to 3:30 PM on all working days, using cash, cheque, or credit/debit card.
  - Students with outstanding dues will have their academic records withheld and will not be allowed to register for the next semester.

**Students who pay tuition fees with post-dated cheques must follow the following procedures:**

- All Cheque(s) should be made payable to “SYMBIOSIS INTERNATIONAL UNIVERSITY” and the date mentioned on the Cheque(s) should not be later than the 10th of the month.
- In the event of a Cheque being dishonored, the student will be charged with Cheque Return charges as mentioned in the Fees Structure.
- In case of withdrawal from a program by the student, the fee will be processed as per the Refund Policy.
- The rest of the submitted post-dated cheques will be returned.

**Program Tuition Fees**

<b>Academic Fees</b>	<b>Annual Fees (AED)</b>	<b>Annual Fees In AED (5% VAT incl)</b>
Master of Business Administration (MBA)	45,000	47,250

<b>Other Fees / Charges</b>	<b>Payment Frequency</b>	<b>Fee - AED</b>
<b>Common Fees</b>		
Application Fee	One Time	1,500 (VAT incl.)
Security Deposit	One Time	4,000
Backlog Fee	As Applicable	500 + 5% VAT
Graduation Fees	One Time	500 + 5% VAT
Visa and Medical Insurance (Inside UAE)	Yearly	6,000 (VAT incl.)
Visa and Medical Insurance (Outside UAE)	Yearly	5,000 (VAT incl.)
Visa and Medical Insurance Renewal	Yearly	3,500 (VAT incl.)
Visa Cancellation Fee (Inside UAE)	One Time	800 (VAT incl.)

Visa Cancellation Fee (Outside UAE)	One Time	2100 (VAT incl.)
Hostel Fee	Monthly	As per chosen accommodation*
Transportation Fees	Monthly	As per pickup point*
Bonafide Letters (Driving License, Embassy, Consulate, Passport Office, Bank, RTA. Etc.)	As Applicable	150 + 5% VAT
Duplicate Transcript charges (per transcript)		100 + 5% VAT
Re-Totalling fee/Re-checking charges		100 + 5% VAT
Degree Certificate changes		150 + 5% VAT
Duplicate Student ID Card		50 + 5% VAT
Duplicate Student Admit Card		50 + 5% VAT
<b>Fines and Penalties</b>		
Late payment fee (Per day)	As Applicable	10 (VAT incl.)
Library Damages	As Applicable	As per incident report
Cheque Dishonor Charges	As Applicable	150 (VAT incl.)

\* Hostel Facility - KSK Homes / The Myriad / Yugo Dubailand / Any other

\* Transportation - STS Transport/Any Other.

Note - All above mentioned charges are subject to change depending upon factors not under the University's control and shall depend on any change in Government / Immigration charges; Insurance subscription charges; Accommodation provider revising rentals; Transport Provider revising rates etc.

### **Tuition & Other Fees**

The tuition fees are charged on an annual basis and remains consistent for students who remain continuously enrolled and complete their program. Any instances of program postponement will be handled in accordance with Refund Policy

- Annual fee changes may occur to both tuition fees and other fees; changes in tuition fees will be applied to only new admissions, other fees changes will be applicable to both new admissions and continuing students.
- These changes will take effect at the beginning of each new academic year, and detailed information will be published by the Finance Department beforehand.
- Any change to tuition and other fees shall be announced and broadcasted well in advance on all SIUD communication platforms including the Catalogue of the academic year, prior to the start of each academic year.

### **Fines & Penalties:**

- A late fee payment of AED 10/-per day will be charged if fees are not paid by the due date.
- Any dishonored charges will be subject to a 150AED fee.
- Exam appearance and access to all University facilities may be restricted in the case that the fee is not paid.
- Any certification including at the completion of a course/program shall be subject to full fees payment as prescribed.

### **Scholarship/ Fee waiver**

- The approval of the scholarship is subject to meeting the admission, scholarship criteria and submission of the supporting documents.
- Students who meet the admissions requirements and complete the registration formalities will be offered a fee payment plan in addition to the scholarship / fee waiver granted to them at the time of acceptance.

## Master of Business Administration

<b>Degree Structure</b>	Total credits – 45 (Generic Core – 27; Specialization* – 9; Internship – 3; Master’s Thesis – 6) * Every student has to choose one focused areas and complete the required credits in the area
<b>Focus areas</b>	<ul style="list-style-type: none"> <li>• Strategic Management and Leadership</li> <li>• Innovation and Entrepreneurship</li> <li>• International Business</li> </ul>
<b>Duration</b>	4 semesters
<b>Credits and Experiential Learning</b>	SIU Dubai offers courses carrying 3 Credits and a Masters' Thesis carrying 6 Credits. Each Credit is equivalent to 15 Classroom Teaching Hours. Each course also contains upto 20% of hours conducted using Experiential Learning methods.
<b>Student Intake</b>	Two intakes - Fall and Spring
<b>Eligibility</b>	<p>Prospective students must have completed a full time Bachelor Degree program in any discipline from any statutory university or any other recognized foreign university with minimum CGPA of 3 on a 4-point scale.</p> <p>Students with a CGPA of less than 3 on a 4-point scale may be admitted conditionally with the prior approval of the Board of Governors of SIU, Dubai and in accordance with the rules prescribed by MoE, UAE.</p> <p>English Proficiency*: A minimum EmSAT score of 1400, or TOEFL score of 550 (213 CBT, 79 iBT), or 6.0 IELTS academic, or their equivalent on any other standardized, nationally or internationally recognized test that is approved by the Ministry of Education (MoE), UAE.</p> <p>*Students who have completed undergraduate education in an English-medium institution in a reference English-speaking country might be allowed admission into a graduate program without demonstrating a TOEFL score of 550 (or equivalent).</p>
<b>Selection Procedure</b>	The Admission Committee will shortlist the applications based on the student's previous academic track record, English Proficiency Test, Statement of Purpose, Letters of Recommendation, Passport copy, and CV (Curriculum Vitae). Shortlisted candidates will be invited for a personal interview. SIU, Dubai, will then declare the merit list of the selected candidates.
<b>Fee Structure</b>	<p>Fees per year : AED 45000*</p> <p>* VAT @ 5% will be charged extra • ACADEMIC FEES TO BE PAID IN AED/USD</p> <p>Caution Money Deposit (Refundable) : AED 4000 (To be paid in the 1<sup>st</sup> year)</p>
<b>Courses*</b>	<p><b>Generic Core</b></p> <ul style="list-style-type: none"> <li>• Principles and Practices of Management</li> <li>• Research Methodology</li> <li>• People Management</li> <li>• Data Analytics</li> <li>• Financial Management</li> <li>• Accounting and Finance</li> <li>• Operations and Supply Chain Management</li> <li>• Marketing Management</li> <li>• Economics for Managers</li> </ul> <p><b>Focus area: Strategic Management and Leadership</b></p> <ul style="list-style-type: none"> <li>• Strategic Management</li> <li>• Digital Transformation and Strategy for Business</li> <li>• Creativity and Problem Solving</li> </ul>

**Focus area: Innovation and Entrepreneurship**

- Fundamentals of Entrepreneurship and Innovation
- Design Thinking for Management
- Global Megatrends in Business Management

**Focus area: International Business**

- Global Business Environment
- International Finance
- International Human Resource Management



# Course Description

## Semester I

### Principles and Practices of Management (3 Credits)

This course gives students a comprehensive understanding of management principles and their practical application. It covers various theories and managerial roles, including planning, organization, and decision-making. The objective is to gain a holistic perspective on the role of managers in a business organization.

### Research Methodology (3 Credits)

The course provides an overview of research methods used in management studies and helps students undertake independent research projects.

### Data Analytics (3 Credits)

This practical course equips students with skills in data analytics using Microsoft Excel. The course covers topics like data visualization, interpretation, and analysis, and helps students to harness the power of data for effective decision-making in a business context.

## Semester II

### Financial Management (3 Credits)

The course will help gain a thorough understanding of the tools and techniques used in financial management, develop an analytical and practical approach to making corporate financial decisions, and apply and analyze these concepts in real-life scenarios.

### Accounting and Finance (3 Credits)

The course introduces the basic theory, concepts, and practices related to financial accounting. It helps students understand the steps involved in preparing and interpreting financial statements and familiarizes them with the latest developments in the accounting field.

### Operations and Supply Chain Management (3 Credits)

This course thoroughly introduces Operations and Supply Chain Management, covering all the key concepts and strategies. Starting with the basics, it moves on to more advanced topics such as operations strategy, process analysis, inventory management, and supply chain design. It further delves into the complexities of technology adoption, risk management, sustainability practices, and global challenges, understanding this dynamic field comprehensively.

### Marketing Management (3 Credits)

The course provides a comprehensive discussion of fundamental marketing concepts to understand industry trends. It focuses on the concept of value in the context of marketing and analyzing marketing strategies. The students will experiment with out-of-the-box thinking that helps them develop innovative marketing strategies.

## Semester III

### Economics for Managers (3 Credits)

The course overviews economic fundamentals and their real-life applications in decision-making scenarios. The modules covered include supply and demand analysis, market dynamics, cost-benefit analysis, and macroeconomic variables that affect strategic managerial decision-making.

### Strategic Management (3 Credits)

The students will develop and further hone their skills in formulating and implementing effective organizational strategies while studying this course. It covers topics such as SWOT analysis, competitive advantage, and long-term planning, providing students with the tools to navigate dynamic business environments and make informed decisions to achieve sustainable success.



**Fundamentals of Entrepreneurship and Innovation (3 Credits)** The course seeks to help students learn the fundamentals of entrepreneurship such as idea generation, business planning, and innovation strategies, and acquire the skills necessary to navigate the entrepreneurial landscape.

**Global Business Environment (3 Credits)** The course helps students to gain insights into the complexities of the global business landscape, covering international markets, cultural considerations, and economic factors to make informed decisions in a rapidly changing global environment.

**Digital Transformation and Strategy for Business (3 Credits)** In this course, students will explore the impact of technology on business models and learn strategies for digital transformation. The course will further emphasize how organizations can leverage technology to enhance competitiveness and adapt to the evolving digital landscape..

**Design Thinking for Management (3 Credits)** The course helps students to explore a problem-solving approach centred on people, using creative ideation, prototyping, and user testing to tackle complex issues innovatively.

**International Finance (3 Credits)** The course helps students to analyze the complexities of global financial markets, including exchange rates, international investment, and risk management and enables informed decision-making in a cross-border context.

**Internship (3 Credits)** An internship is an opportunity for students to gain practical experience in their discipline. Students have an opportunity to apply theoretical knowledge to real-world situations, gain valuable industry experience, and refine essential skills that can enhance their employability and professional growth.

#### **Semester IV**

**People Management (3 Credits)** The course will enhance students' leadership and interpersonal skills, focusing on effective communication, team building, and talent management strategies to optimize organizational performance.

**Creativity and Problem Solving (3 Credits)** The course helps students to cultivate problem-solving and creative thinking skills using frameworks for innovation in various professional contexts.

**Global Mega Trends in Business Management (3 Credits)** The course examines significant global trends shaping the future of industries and societies. It will help students understand the implications of these trends for business strategies and decision-making.

**International Human Resource Management (3 Credits)** The course explores the intricacies of managing human resources globally, addressing challenges such as cultural diversity, international labor laws, and talent acquisition on an international scale.

**Master's Thesis (6 Credits)** The Master's thesis is a pivotal component of an MBA program, serving as a comprehensive demonstration of a student's ability to engage in self-directed research and apply the cumulative knowledge gained throughout their studies. This extensive project challenges students to delve deeply into a specific area of interest, allowing them to synthesize theories, concepts, and skills acquired during their coursework into a coherent, research-based inquiry.

## Fee Refund Policy

### Policy for Refund of Fees on account of Cancellation of Admission for Graduate Programmes.

Sr. No.	Cancellation/ Withdrawal of Admissions Before Commencement of the Programme	Cancellation/Withdrawal of Admissions After Commencement of the Programme	
		Within 2 weeks from Commencement of the Programme	After 2 weeks from Commencement of the Programme
1	Full refund of fees except Application Fees which are Non-Refundable.	50% of the Academic Fees will be deducted and remaining amount will be refunded.	100% of the Academic Fees will be deducted.
2	Administrative fees of AED 1000 + 5% VAT will have to be paid by the student at the time of application for the cancellation of the admission.	Administrative fees of AED 1000 + 5% VAT will have to be paid by the student at the time of application for the cancellation of the admission.	Administrative fees of AED 1000 + 5% VAT will have to be paid by the student at the time of application for the.

#### Notes:

- If the student does not attend any class for 3 consecutive weeks from the commencement of the program, SIU Dubai has the right to cancel admission and the student's visa; no fee refund will be applicable, and visa cancellation charges will have to be paid by the student.
- Application Fees are Non-Refundable.
- No refund will be applicable if a student transfers application to the next intake and decides to cancel thereafter.
- Refundable amounts are calculated based on the date that the withdrawal form is submitted to Student Services, regardless of the student's enrollment status, attendance history, or joining date.
- Refunds will be processed within 45 to 60 days after the withdrawal and supporting documentation are submitted.

## Grading System

Symbiosis International University, Dubai, will follow Cumulative Grade Point Average (CGPA) systems for all the programs.

- All SIU Dubai programs adhere to the distribution of Continuous Assessments and Semester End Examinations prescribed in their respective approved program structures.
- Mandatory non-credit courses shall not be considered for computation of GPA/ CGPA. The grade P (Pass) will be printed on the grade sheet after the student passes the course. This course is evaluated on a 100% continuous basis.
- The assessment of the student for each examination is done based on absolute grading.
- The percentage of marks attained in a course will be converted to grades and grade points based on the scale below. The maximum Grade Point (GP) for each course is 10.00, corresponding to A+. For all courses, a student is required to pass Continuous Assessment (CA) and Semester End examinations (SE) separately with a minimum Grade Point of 7.5 for Graduate programs corresponding to Grade D . Students securing less than D in any head of passing will be declared FAIL in that particular head (CA or SE).

Percentage of Marks	Letter Grade	Grade Points
95 and above	A+	10
90 – 94.99%	A	9
85 -89.99%	B	8.5
80 – 84.99%	C	8
75 – 79.99%	D	7.5
Below 75%	F	0

### Evaluation and Student Progress:

- Students admitted to SIU, Dubai's 2-year (four semesters) degree programs are allowed to keep term for one year from the date of admission beyond the normal period of the program, i.e., a student joining a two-year program must complete the program in three years from the date of admission. A student will attend classes of all the years with their batch. If a student does not receive the necessary passing grades; the following rule will be applicable as per the total number of semesters in a program:
- They cannot appear for the Semester End Examination of Semester 3 if they have a CGPA of less than 7.5 up to Semester 1.
- They cannot appear for the Semester End Examination of Semester 4 if they have a CGPA less than 7.5 up to Semester 2.
- However, a student eligible to appear for a later semester will also be permitted to appear for all the previous semesters, irrespective of the ATKT rule applicable to that Semester. (e.g., A student with a CGPA less than 7.5 at the end of Semester 1 but a CGPA greater than 7.5 at the end of Semester 2 will be eligible to appear for Semester End Examinations of Semester 3 and Semester 4).

### **Graduate Research:**

- SIU, Dubai is committed to providing strong supervision for graduate students pursuing research, including robust coursework and joint-supervision. Qualified faculty will be appointed to supervise the Master's thesis. Adequate resources will be allocated to support research initiatives. To enhance the research skills of students by actively involving them in research endeavors, thereby enriching their educational experience and contributing to their professional development.
- Necessary support, including supervision, will be provided for students during their thesis/project work. Faculty with appropriate expertise and experience will be appointed as mentors. Each faculty member will be assigned a specific number of students as mentees at a time and will be included as part of their workload.
- Opportunities will be created for students to engage in research projects, including independent studies, group projects, and faculty-led initiatives. Ethical Considerations and Compliance will be abided.





**Legacy of more than 50 years of Excellence in Quality Education**

**Symbiosis International University, Dubai.**

**Block 14**

**Dubai Knowledge Park**

**United Arab Emirates (U.A.E)**

**Email: [admissions@siu-dubai.ac.ae](mailto:admissions@siu-dubai.ac.ae)**

